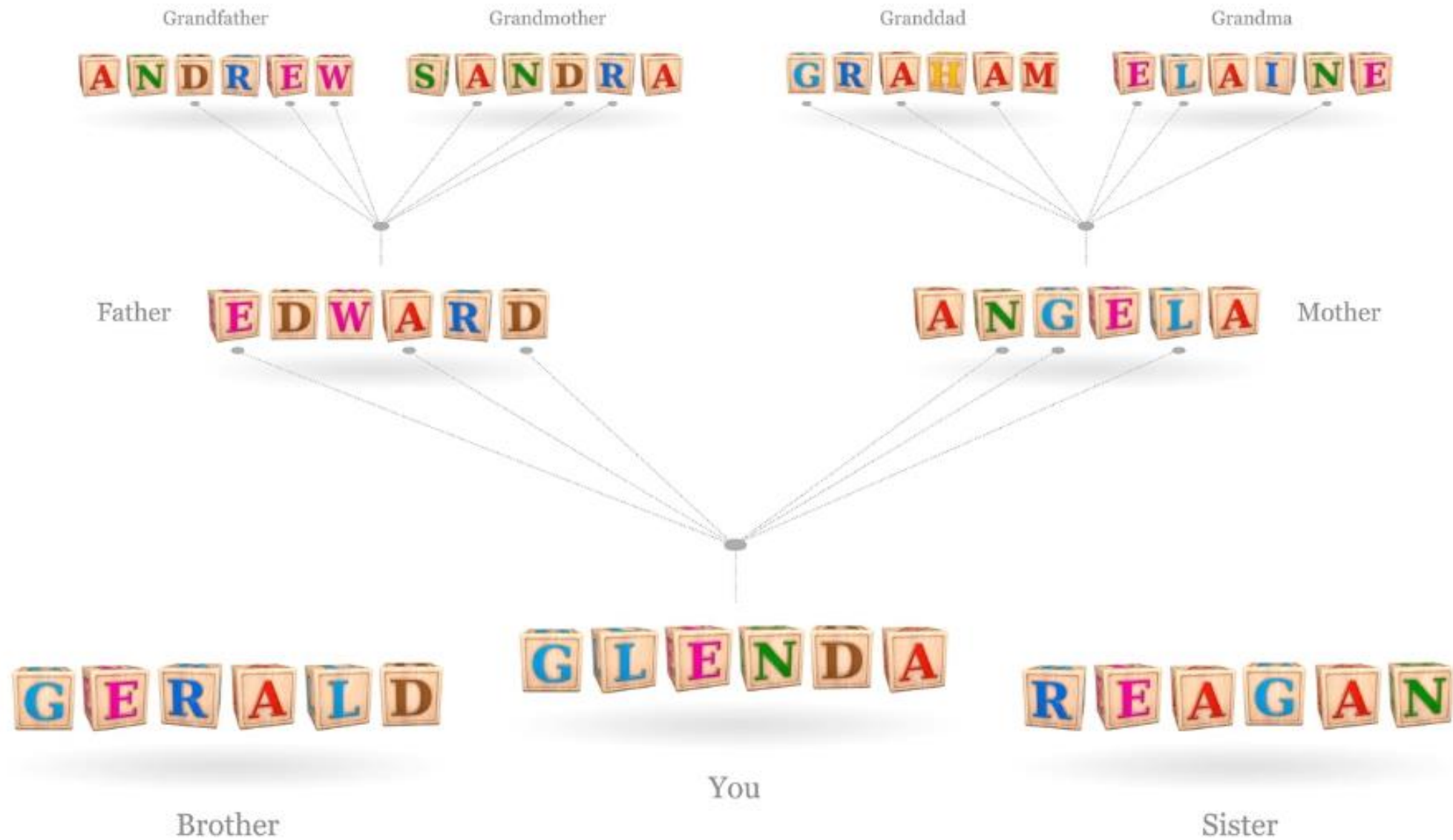
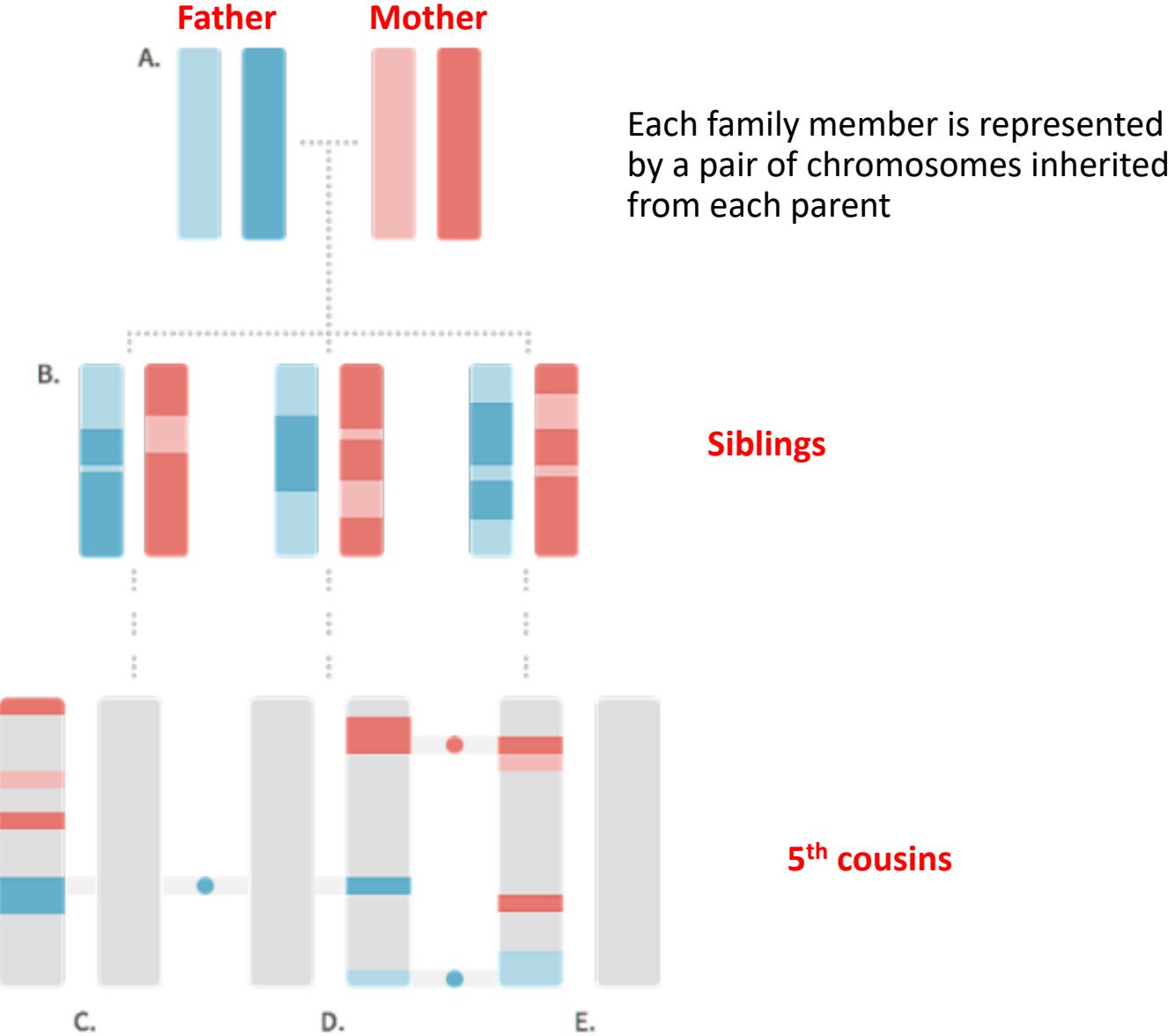


50% rule – but it is random

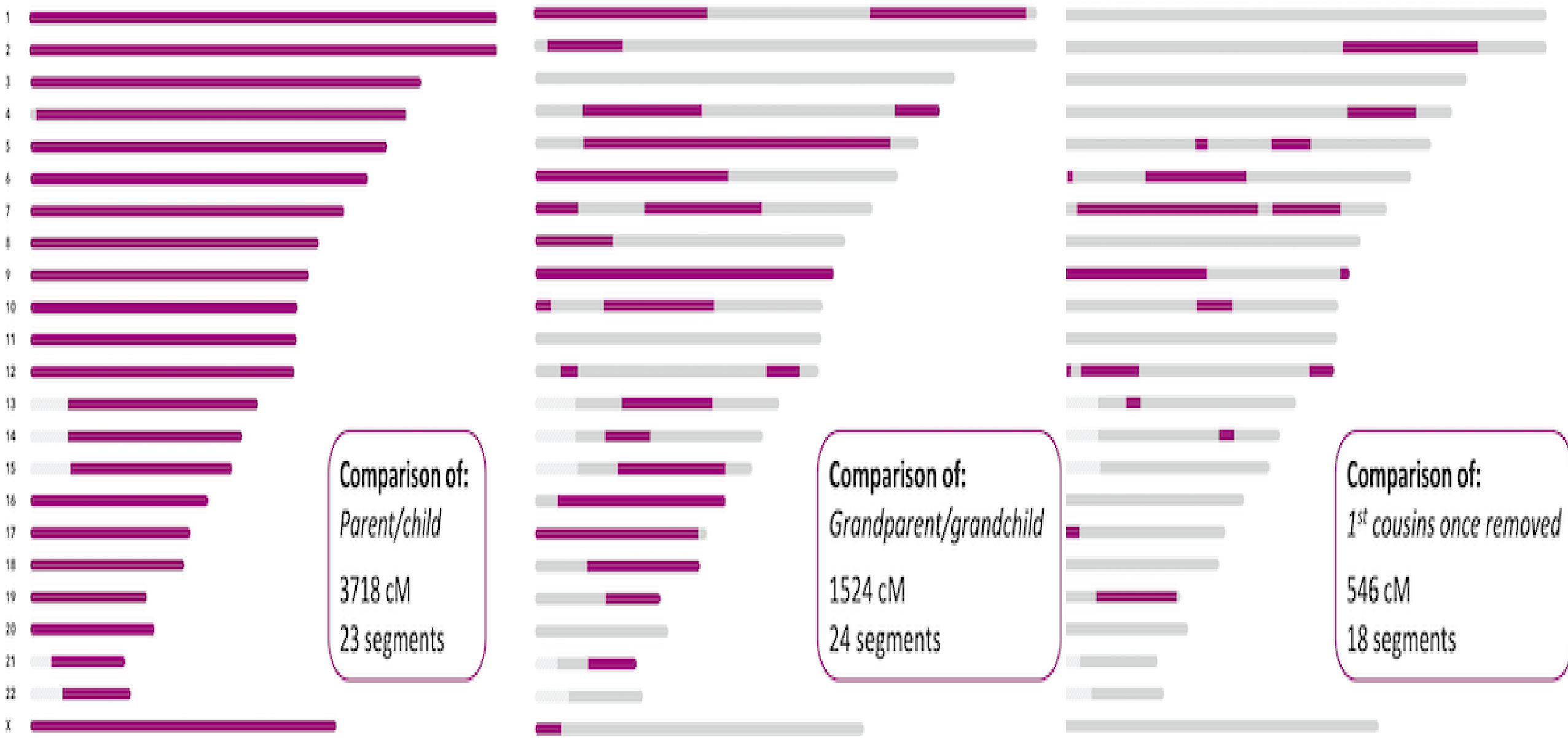


Just one set of Chromosomes

50% DNA from each parent



More complicated with all 23 Chromosomes



The Shared cM Project – Version 4.0 (March 2020)

Blaine T. Bettinger
www.TheGeneticGenealogist.com
CC 4.0 Attribution License

How to read this chart:

Aunt/Uncle

1741

1201 – 2282

Relationship

Average

Range (min-max)

Great-Great-Great-Grandparent

GGGG-Aunt/Uncle

Great-Great-Grandparent

GGG-Aunt/Uncle

Half GG-Aunt/Uncle 208 103 – 284	Great-Grandparent 887 485 – 1486						Great-Great Aunt/Uncle 420 186 – 713	1C3R 117 25 – 238	2c3R 51 0 – 154	Other Relationships	
Half 1C2R 125 16 – 269	Half Great-Aunt/Uncle 431 184 – 668	Grandparent 1754 984 – 2462				Great Aunt/Uncle 850 330 – 1467	1C2R 221 33 – 471	2c2R 71 0– 244	3C2R 36 0 – 166	6C 18 0 – 71	
Half 2c1R 66 0 – 190	Half 1C1R 224 62 – 469	Half Aunt/Uncle 871 492 – 1315	Parent 3485 2376 - 3720		Aunt/Uncle 1741 1201 - 2282	1C1R 433 102 – 980	2c1R 122 14 – 353	3C1R 48 0 – 192	4C1R 28 0 – 126	6C1R 15 0 – 56	
Half 3c 48 0 – 168	Half 2c 120 10 – 325	Half 1C 449 156 – 979	Half-Sibling 1759 1160 – 2436	Sibling 2613 1613 – 3488	SELF	1C 866 396 – 1397	2c 229 41 – 592	3c 73 0 – 234	4c 35 0 – 139	5c 25 0 – 117	6C2R 13 0 – 45
Half 3c1R 37 0 – 139	Half 2c1R 66 0 – 190	Half 1C1R 224 62 – 469	Half Niece/Nephew 871 492 – 1315	Niece/Nephew 1740 1201 - 2282	Child 3487 2376 – 3720	1C1R 433 102 – 980	2c1R 122 14 – 353	3C1R 48 0 – 192	4C1R 28 0 – 126	5C1R 21 0 – 80	7C 14 0 – 57
Half 3c2R 27 0 – 78	Half 2c2R 48 0 – 144	Half 1C2R 125 16 – 269	Half Great Niece/Nephew 431 184 – 668	Great-Niece/Nephew 850 330 – 1467	Grandchild 1754 984 – 2462	1C2R 221 33 – 471	2c2R 71 0– 244	3C2R 36 0 – 166	4C2R 22 0 – 93	5C2R 18 0 – 65	7C1R 12 0 – 50
Half 3c3R	Half 2c3R	Half 1C3R 60 0 – 120	Half GG Niece/Nephew 208 103 – 284	Great-Great-Niece/Nephew 420 186 – 713	Great-Grandchild 887 485 – 1486	1C3R 117 25 – 238	2c3R 51 0 – 154	3C3R 27 0 – 98	4C3R 19 0 – 60	5C3R 13 0 – 30	8C 11 0 – 42

Minimum was automatically set to 0 cM for relationships more distant than Half 2C, and averages were determined only for submissions in which DNA was shared